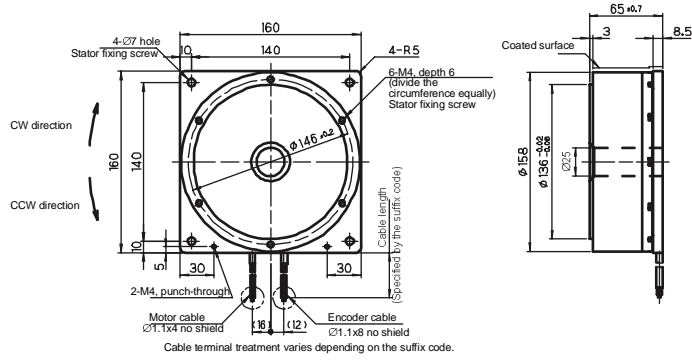
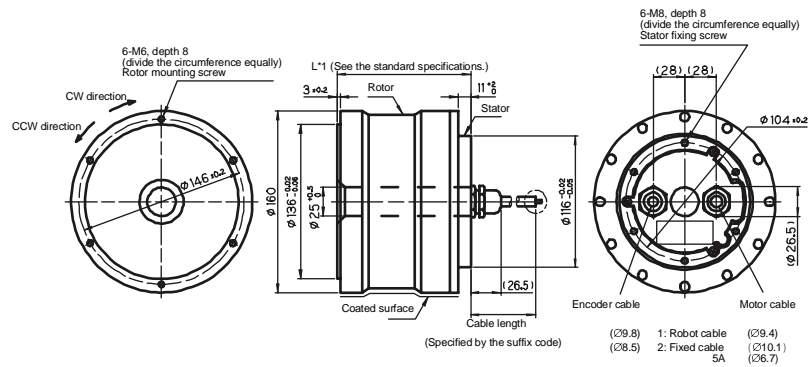


(3) DM1B-006

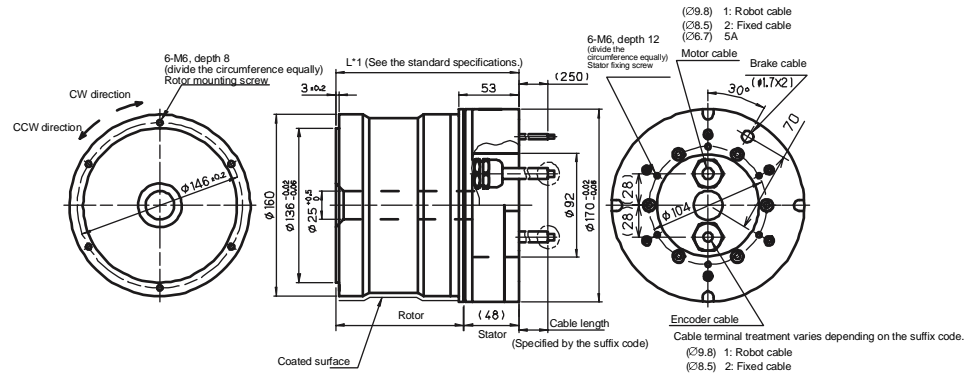


(4) DM1B (Excluding DM1B-004 and DM1B-006)

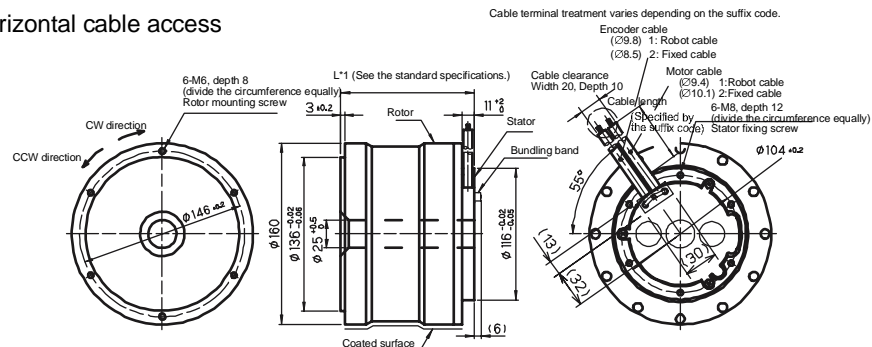
Standard profile



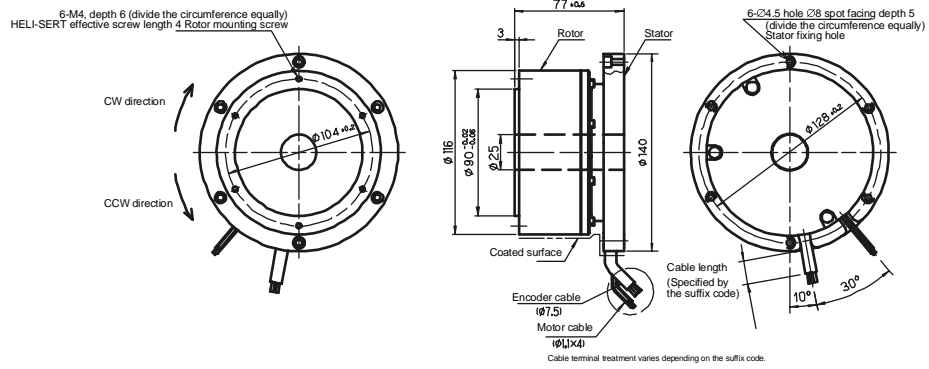
With mechanical brake



Horizontal cable access

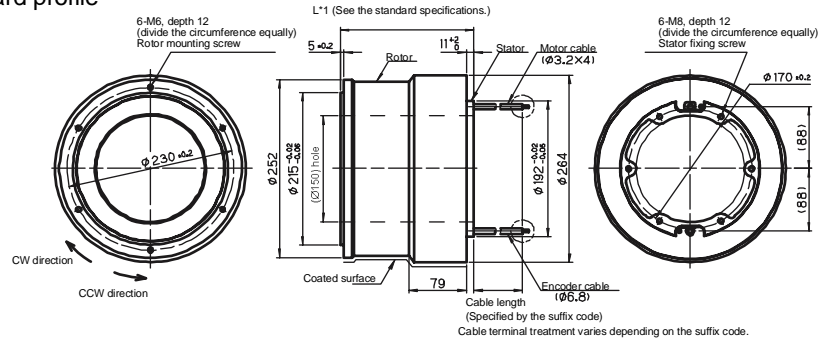


(5) DM1C-004

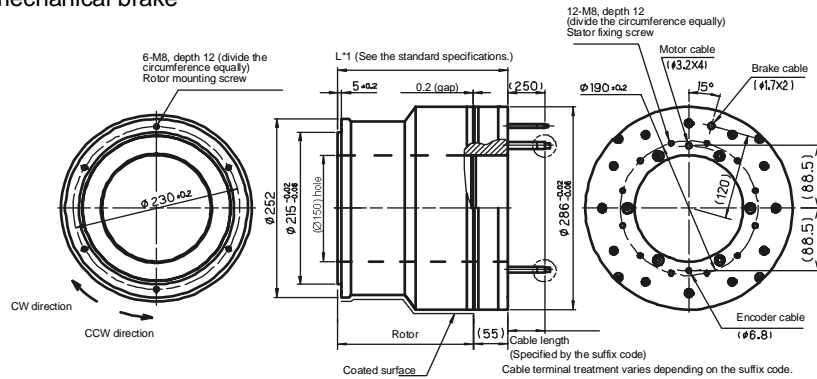


(1) DR1A

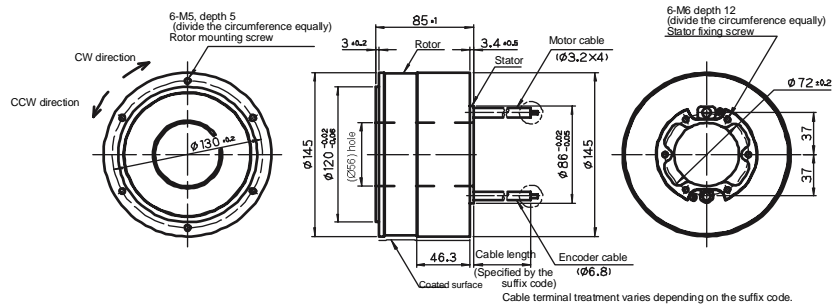
Standard profile



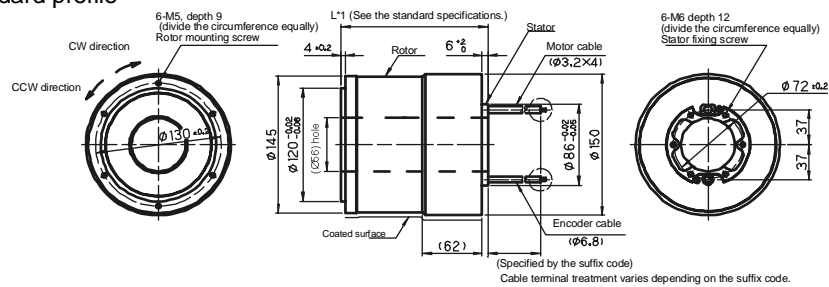
With mechanical brake



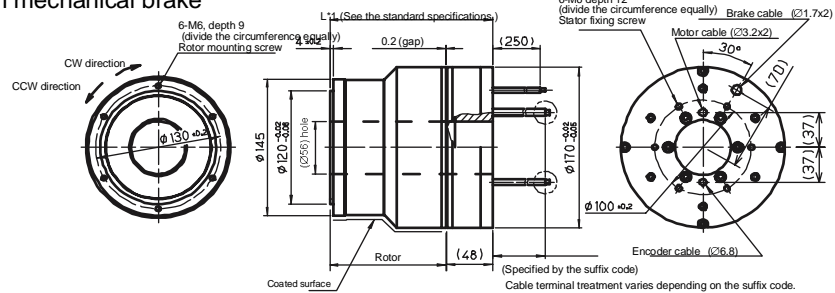
(2) DR1B-008



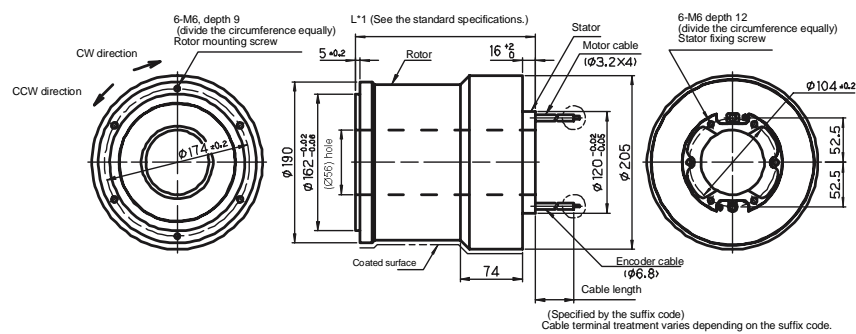
(3) DR1B (Excluding DR1B-008), DR5B
Standard profile



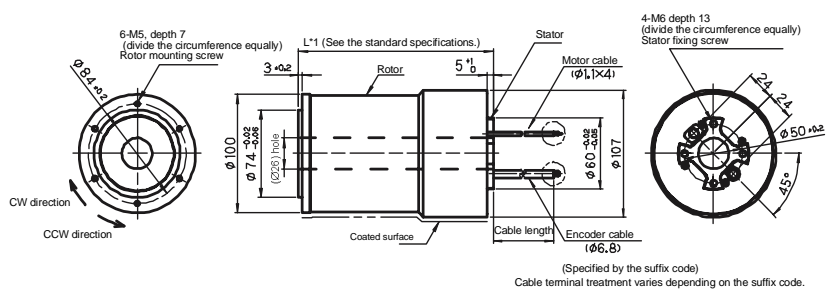
With mechanical brake



(4) DR1E, DR5E

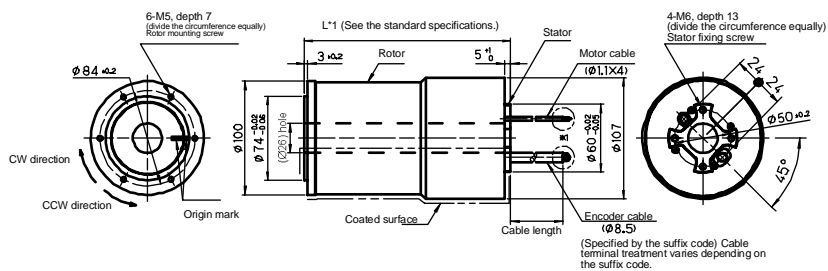


(5) DR5C

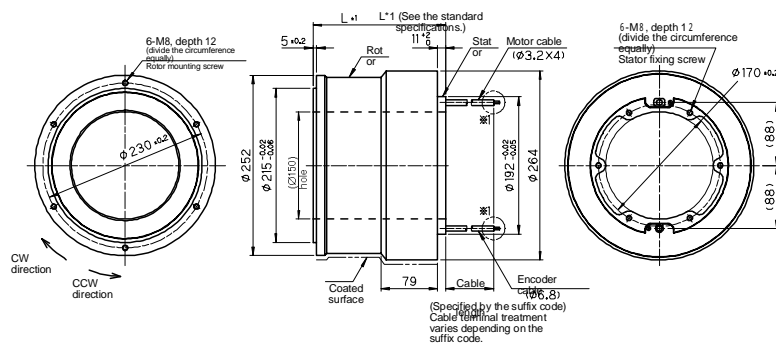


DB5 Motor

(1) DB5C

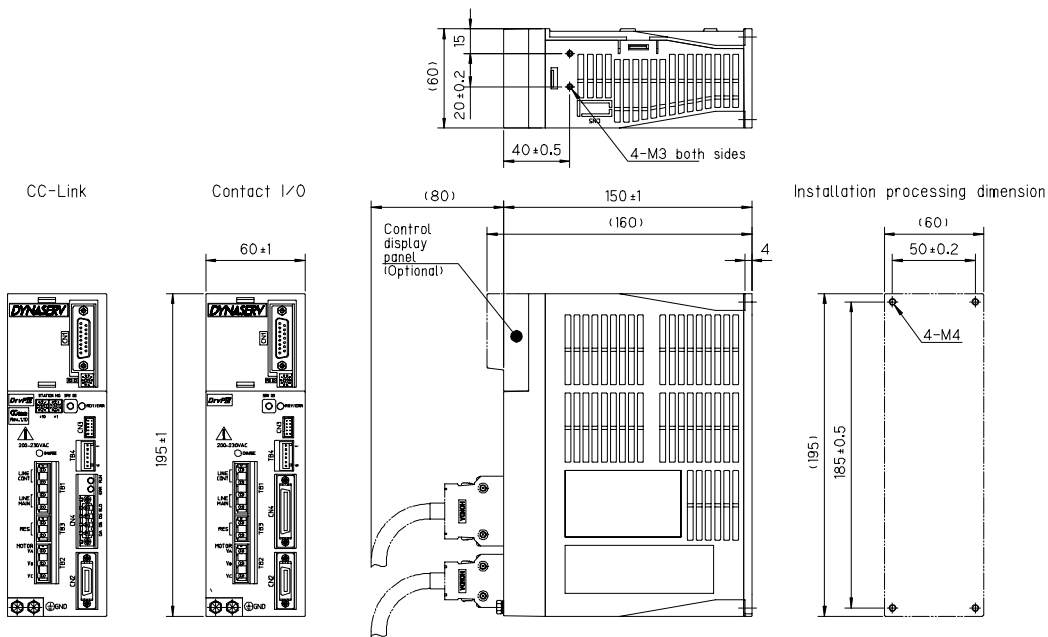


DR5A Motor

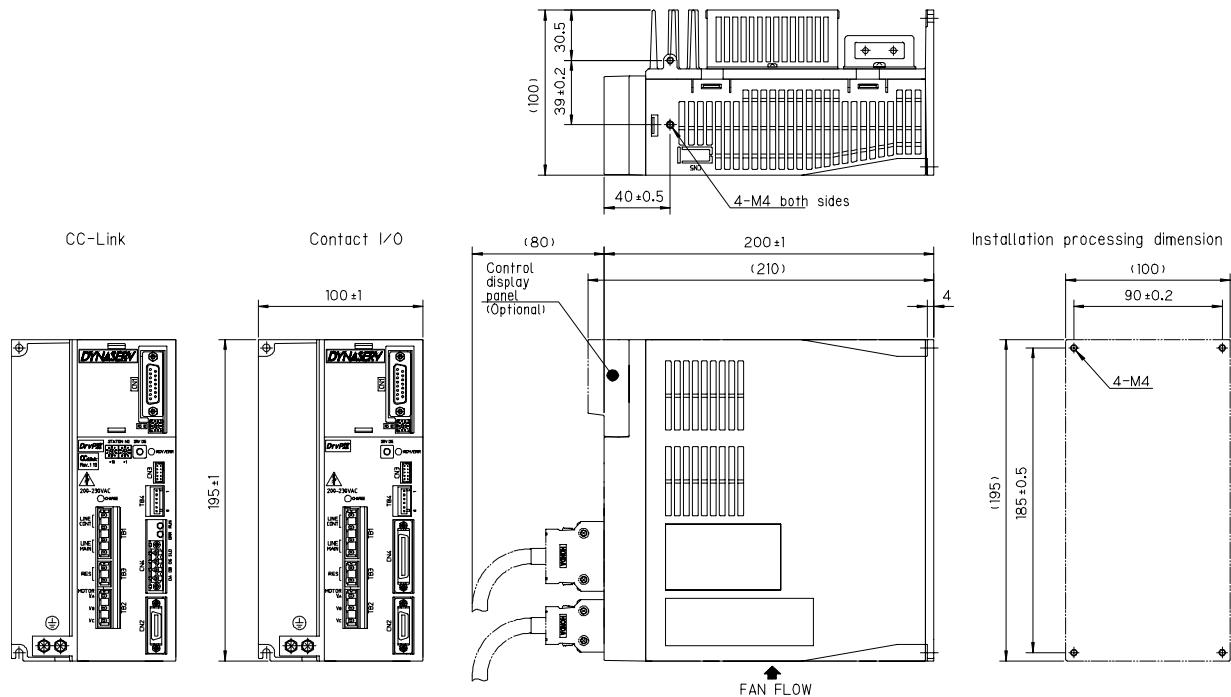


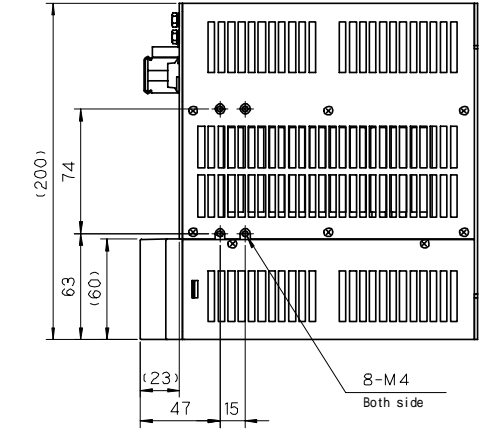
Drive

■500 W Class



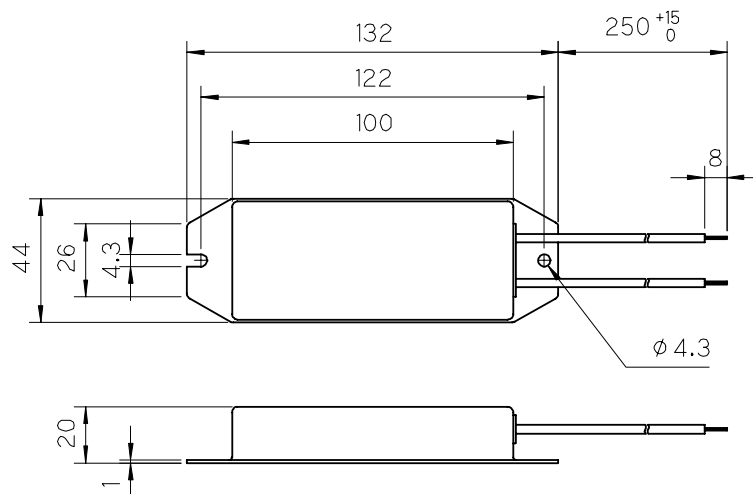
■2kW Class





Regeneration Resistor

■80 W Regeneration Resistor



2.5.4 Connector

■Controller Connector

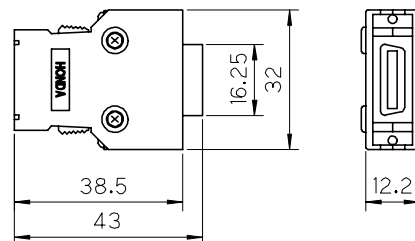
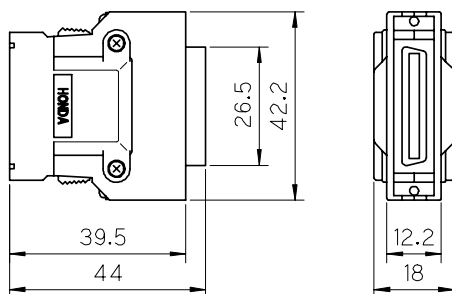
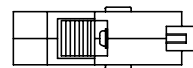
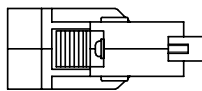
Connector: PCR-S36FS (made by Honda Tsushin Kogyo)

Housing: PCR-LS36LA (made by Honda Tsushin Kogyo)

■Encoder/Resolver Connector

Connector: PCR-S20FS (made by Honda Tsushin Kogyo)

Housing: PCR-LS20LA1 (made by Honda Tsushin Kogyo)



■Controller Connector (CC-Link)

Connector: TMSTBP 2.5/4-STF5,08 (made by Phoenix Contact)

